

# Cannabis Retail Visual Solutions

US Made – Experienced Visual Team – Full-line Stand alone Signage  
Competitive Pricing – Custom is our Specialty

## Products by Store Area

- Entrance ( pg 2 )
- Showroom Floor ( pg 3 )
- Inside Display Case ( pg 4 )
- CounterTop ( pg 5 )
- Shelf Graphics ( pg 6 )
- Wall Category Headers ( pg 7 )
- Behind Cash Register ( pg 8 )
- Store Windows ( pg 9 )
- Shelf Risers ( pg 10 )
- Branded Queuing System ( pg 11 )



August 2021 Edition

# Entrance Signs

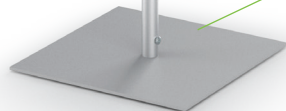
## Perfex Pedestal SignFrames™

- Strong aluminum frame
- Accept 3/16" thick graphics
- Frame is 1" wide x 5/8" deep
- Ideal for double sided graphics



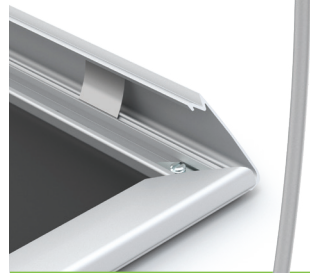
SF3S-SQ-X-V-S

Steel base



## EasyOpen SnapFrame™ Pedestal Stands

- Aluminum front open SnapFrames ideal for thin paper graphics
- Curved upright & oval base
- Quick, secure graphic change-outs



EF1EO-H-S

Attractive curved upright



## Lollipop Stands

- Unique drop-in design for graphics with pop
- Use with circular or shape cut rigid graphics
- 13" & 15" diameter standard models
- Ideal for double sided graphics



LOLPOP15-H





# Showroom Floor Stands

## Poster SignHolders

- Top 1/4" slot for easy graphic insertion
- Room for two 1/8" graphics and 2 lenses (optional)
- Ideal for double sided graphics
- Available 1, 2, 3 tier and optional tilting



## Convex Poster SignHolders

- Dramatic, stylish, elegant two sided curved design
- Available 1, 2, 3 tier, or single tall stand
- Accepts .060 thick styrene graphics
- Curved graphics standout



## Harmony Banner Stands™

- Beautiful fabric graphics provide ambiance
- Pillowcase mounting - easy graphic changes
- Portable, new graphic ship small
- Curved or Square Tops



# Inside Display Case

## Eclipse™ Tabletop SignHolders

- All metal construction
  - Available in Satin Silver (-S), Matte Black (-B), or custom colors
  - Custom sizes available, ideal for use inside display case
- Includes a non-reflective matte overlay
  - Bulk packed for low cost shipping
  - Models TC1 through TC7 made from solid aluminum extrusion



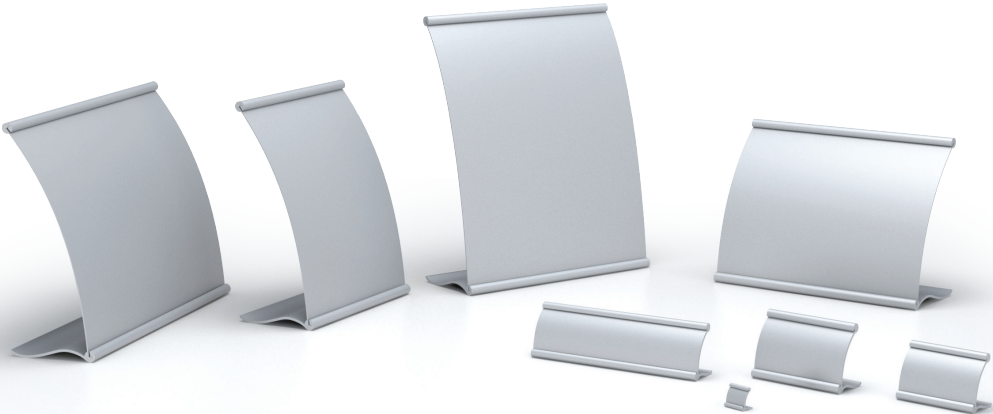
TC1-S CUSTOM – 2”W x 1”H

TC2-S

TC3-S

### Models TC1 through TC4 made from solid aluminum extrusion.

Model	Pcs. Per	W” x H” (Insert Size)
TC1	12 per	1” x 3/4”
TC2	5 per	3-1/2” x 2”
TC3	5 per	8” x 2”
TC4	5 per	4-1/4” x 2-1/2”



### Larger Models TC8 through TC11, welded construction

Model	Vom	W” x H” (Insert Size)
TC8	Each	11” x 8-1/2”
TC9	Each	8-1/2” x 11”
TC10	Each	14” x 11”
TC11	Each	11” x 14”





# CounterTop

## Arctop SignHolders™

- Available base only for 1/8" thick graphics or with lens for paper graphics
- Optional Upright (-U) or Angled (-A) graphic orientation
- Bases are 4" deep
- Aluminum alloy bases



AT02-S



Upright (-U)



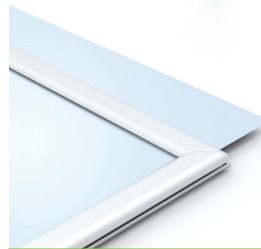
Angled (-A)

## CounterTop Perfex™ Frames

- Top load for 3/16" thick graphics
- 6-3/4" round base & 4" riser
- Ideal for double sided graphics

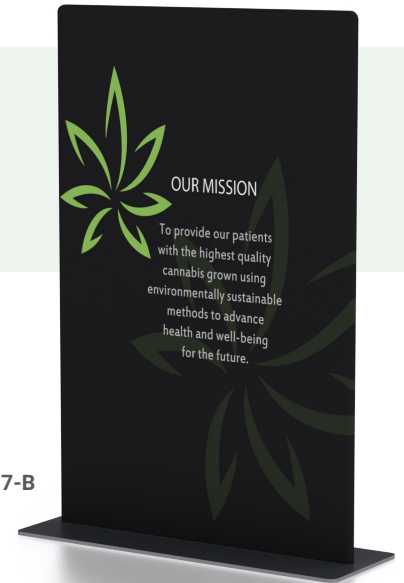


PX1-T-V-S



## Wireform Fabric Pillowcase Stands

- Offered in 2 popular sizes - 11"W x 17"H and 14"W x 22"H
- Use dye sublimated fabric graphics on these economical stands
- All metal with welded construction is built to last
- Fully assembled, high end counter top



WDPC1117-B



# Shelf Edge Graphics

## Metal Shelf Talkers | Side load

- Accommodates 1/16" thick graphics
- Slim 3/16" border top and bottom
- Bulk packed, durable metal construction
- Matte black, 4" deep return

## Metal Shelf Talkers | Top load

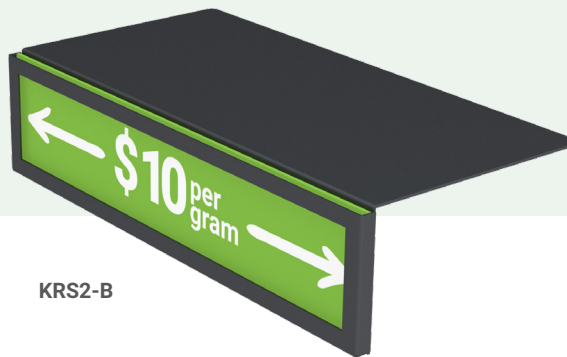
- Accommodates 5/16" graphics or multiple thin graphics
- Full metal frame on four sides
- Matte black, 4" deep return

## Paper/Card Stock SignBack Mounts

- Size & orientation choices
- Accepts paper & card stock up to 1/16" thick
- 3 sided mini channel, simply slide signage in
- Bracket in rear 1 1/4" ID to hang on bin



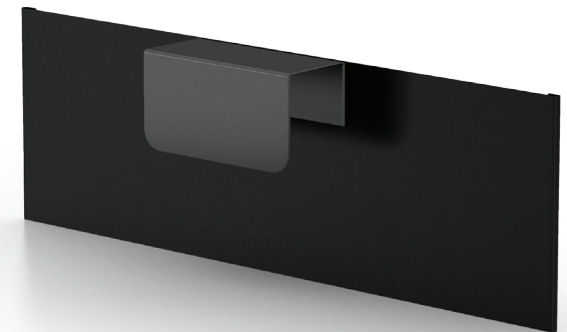
KRE2-B



KRS2-B



SBH1-B





# Wall Category Headers

## Floating StandOff Mounts

- Strong lightweight frame system to float rigid graphics off wall, stand off with 1" gap
- Each frame includes 1x French cleat 3" narrower than the width of the frame
- Available as complete frames kits (without graphic), or for purchase as components

OAT-S | 22" X 8"



## Charisma Mini SEG™

- Frameless graphics keep focus on message
- Fabric graphics provide luxurious look and feel
- Thin 5/8" profile is attractive
- Easy to re-brand and re-organize

XMIN-S | 22" X 8"



## Perfex Hanging SignFrames™

- Choice of Curvilinear, Rectilinear and Mini Frame Profiles
- Standard Satin Silver & Matte Black, custom colors available
- Side loading - for 3/16" thick graphics
- Ships assembled, includes 2 universal hanging clips and 2 top and bottom wall hangers



PX-S  
22" X 8"

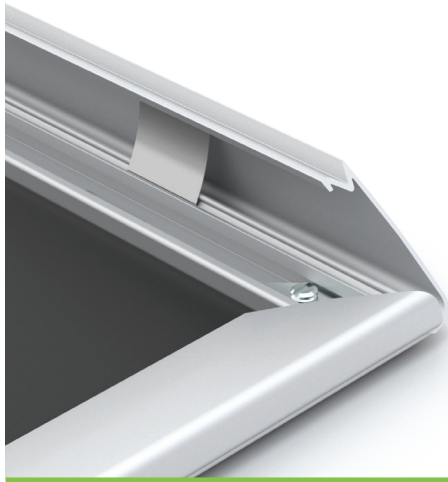
# Behind Cash Register

## EasyOpen SnapFrames™

- Aluminum Snap Frames, 1-1/4" wide, 9/16" deep
- Spring loaded sides for easy graphic insertion
- Rigid styrene backing
- Available in Satin Silver Aluminum or Matte Black



ME-S  
108" X 72"



## Charisma Mini SEG™

- Frameless graphics keep focus on message
- Fabric graphics provide luxurious look and feel
- Thin 5/8" profile is attractive
- Easy to re-brand and update message



XMIN-S  
108" X 72"



## Charisma SEG/LED Slim Profile Light Boxes™

- Beautiful fabric graphics POP with LED illumination
- 3-1/8" deep, SEG channel on front for graphics and on back for reflective backer
- Power cord - Single power cord directly from the lightbox
- Unassembled for low cost shipping, UL certified



XSL-S | SLIM  
108" X 72"

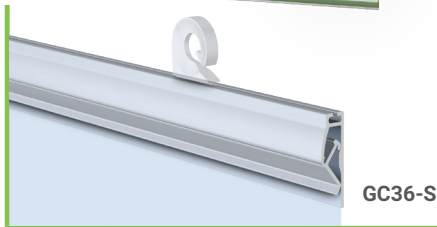




# Store Window Graphics

## Plastic Grippers – Simple & Economical

- Sold in pairs for top and bottom plus attachments
- No pockets or graphic end treatment required
- Includes 2 universal hanging clips
- Use inexpensive posters



GC36-S

## Aluminum Case Snapgraphics™ Grippers

- Beautifully finished aluminum case
- Designed to close easily once graphic is inserted
- Re-usable as graphic changes
- No end treatment required



SN15-S

## Charisma Double Sided Light Boxes™

- Beautiful dye sublimated fabric graphics
- Custom sizes, brackets and finishes are available
- Lightboxes grab attention
- Energy efficient LED lighting



XSD34-S

# Steel Shelf Risers

## Steel Risers

- Display more merchandise
- Make merchandise more easily visible
- Custom sizes and colors available in Qty 25+
- All metal construction
- Fast and easy assembly, save on shipping

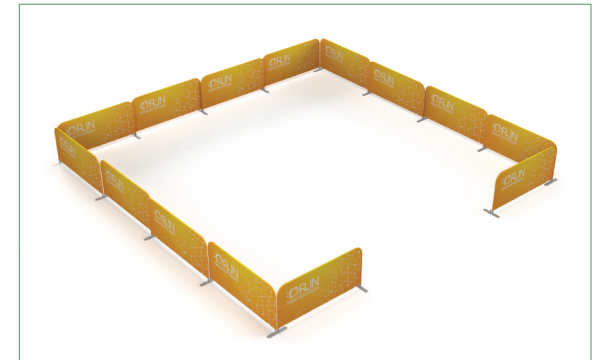




# Branded Queuing System

## Crowd Q Stand™

- 1-1/4" Aluminum tubing construction
- 36" H x 81" W Graphic size - Total stand height 39-1/4"
- Each stand includes qty (2) 3" W x ~17" Long steel bases
- Each base has 2 stems to allow building continuous walls or 90 degree angles
- Fabric cover sold separately, available as an add on



# We Manufacture Over 2,000 Standard Visual Items

---

Aluminum Slat wall • Banner Stands • Charisma SEG • CounterTops •  
Drop-In Frames • Easels • Hanging Graphic Hardware • Magnetic Displays  
• Hand Sanitizer Stands • Cashier Shields • Modular Retail Displays • Rigid  
Graphic Stands • SignPost • Snap Frames • Tension Fabric Structures

## Custom is our specialty!

---

Let us know how we can help your business

Custom Sizes & Many More Graphic Solutions Available! | Experienced Visual Merchandisers on staff!

